



Our Farm to School Classroom News

BluebirdCSA.com October 2017 bluebirdmarket@gmail.com

What's happening?



Oct 2017 is Georgia & Nat'l Farm to School Month celebrating with the curriculum "Make Room for Legumes", provided by GA Organics as the Nat'l Farm to School Network's State Lead for Georgia.

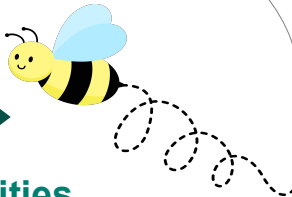
reminders

Have you heard the news? Griffin Christian Academy is joining Bluebird Farm to School & schools across Georgia to celebrate Nat'l & Georgia Farm to School Month this October.

Throughout the month, students and teachers may participate in legume-related activities, such as growing their own legumes, taste testing legume recipes, and discovering how eating legumes contributes to a healthy lifestyle.

Q: What's a poet's favorite legumes?

A: Rhyma-beans!



We're learning

3 Farm to School Month Activities

1. Taste Test

Compare & Contrast: How to prepare Green Beans in 3 ways, taste test and vote for my favorite recipe.

2. Germination

Science: Identify & sprout 3 varieties of legumes in the classroom.



3. Native American customs

Social Studies & Reading: Native American culture legend, '3 sisters' planting of corn, squash & beans.

Theme: Legumes

Science: Essential Nutrients in the soil

Math: In 2014, GA farmers harvested 591,000 acres of peanuts, the official state crop, yielding 2.4 billion lbs. How many lbs of peanuts did each acre yield?

October is Nat'l & Georgia Farm to School Month, & Bluebird Farm to School is excited to join in with Griffin Christian Academy & schools across Georgia for the fun!